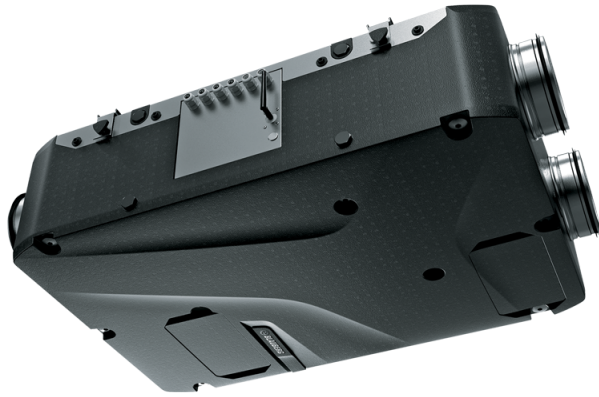


Reneo D 240-E S21

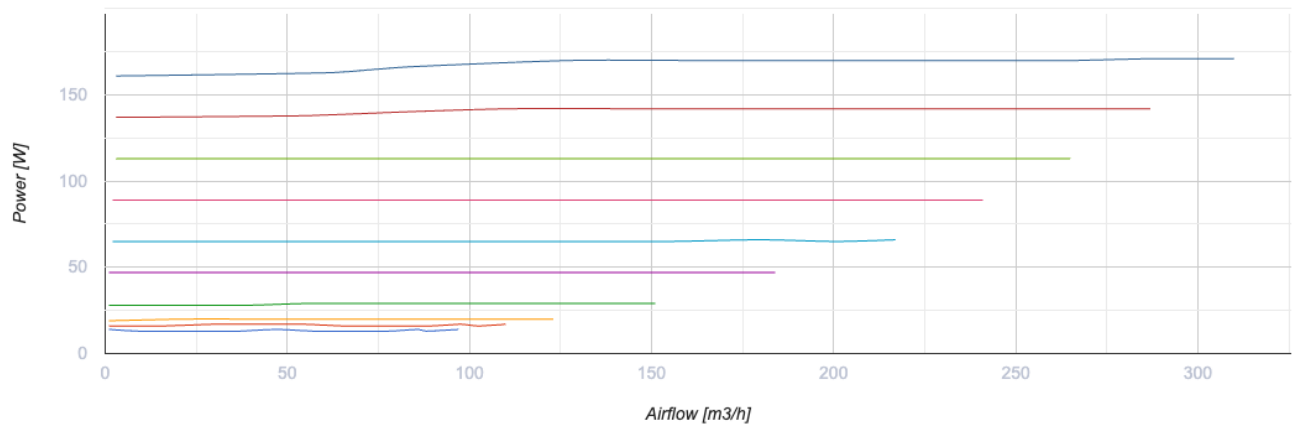
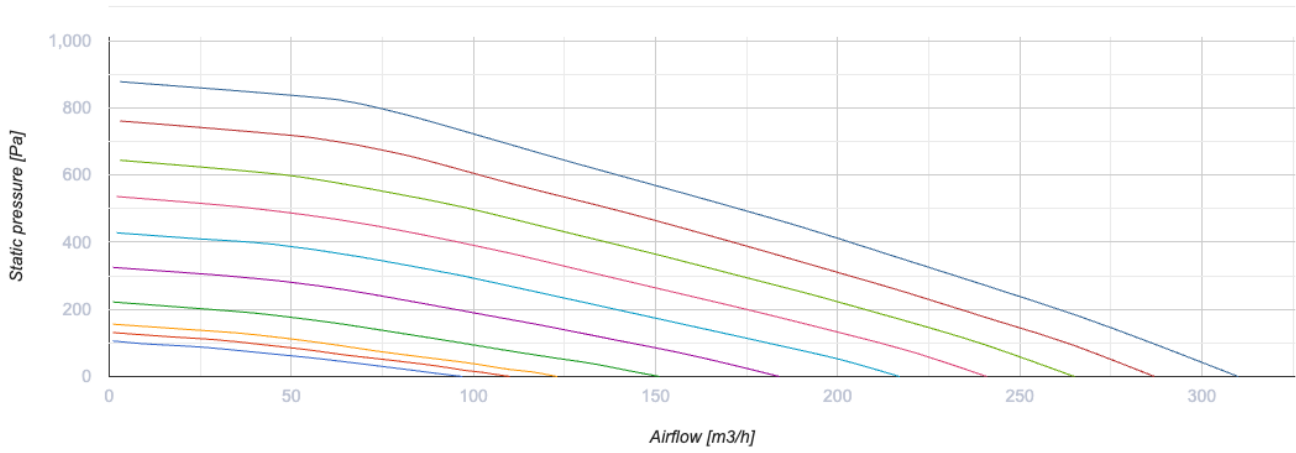
Heat and energy recovery air handling units



- Sound pressure level LpA at 3 m: 33
- Heat exchanger type: Counter flow
- Extract filter: Coarse > 60 %
- Supply filter: Coarse > 60 % (G4) (option: ePM1 60 % (F7))
- In sound-insulated casing
- Motor type: EC
- Enthalpy heat exchanger
- Bypass: Auto
- Preheater: Optional
- Reheater: Optional
- BMS protocol: ModBus
- Control: Smartphone
- Casing material: EPP
- Humidity sensor: Optional
- CO2 sensor: Optional
- VOC sensor: Optional
- PM2.5 sensor: Optional

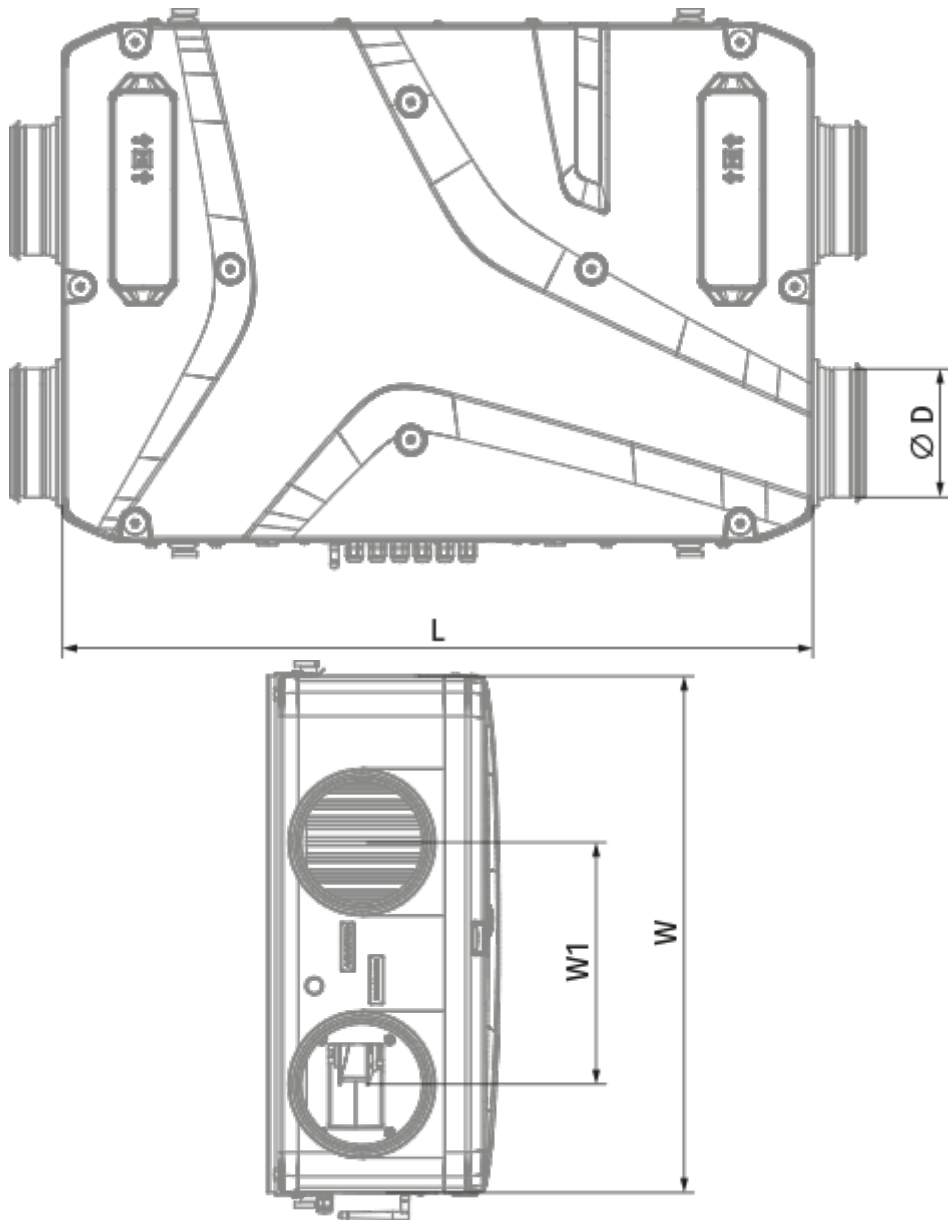
	Unit of measurement	Reneo D 240-E S21
Phases	-	1
Minimum supply voltage	V	230
Maximum supply voltage	V	230
Power supply frequency	Hz	50/60
Rated power	W	171
Unit current	A	1.34
Maximum airflow	m ³ /h	310
Sound pressure level LpA at 3 m	dB(A)	33
Heat recovery efficiency, max	%	81
Heat exchanger type	-	Counter flow
Heat exchanger material	-	Enthalpy
Weight	kg	16
Extract filter	-	Coarse > 60 %
Supply filter	-	Coarse > 60 % (G4) (option: ePM1 60 % (F7))
Transported air temperature (max)	°C	45
Ambient air temperature min	°C	1
Ambient air temperature max	°C	40
Ambient air humidity max	%	60
Ingress protection rating	-	IP22

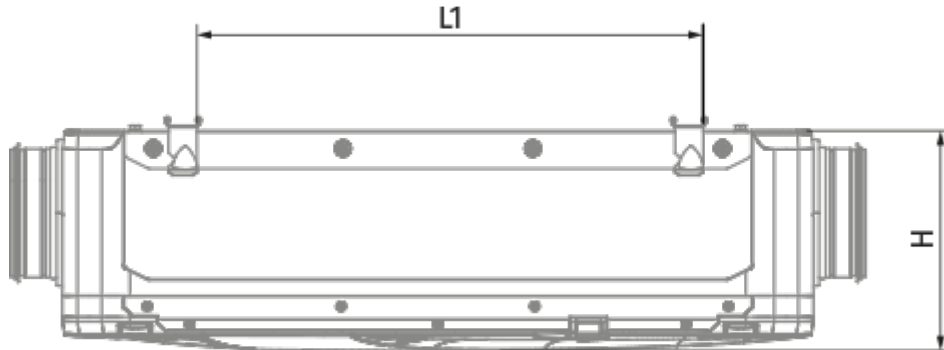
Ingress protection rating of the drive	-	IP44
Article	-	8106248



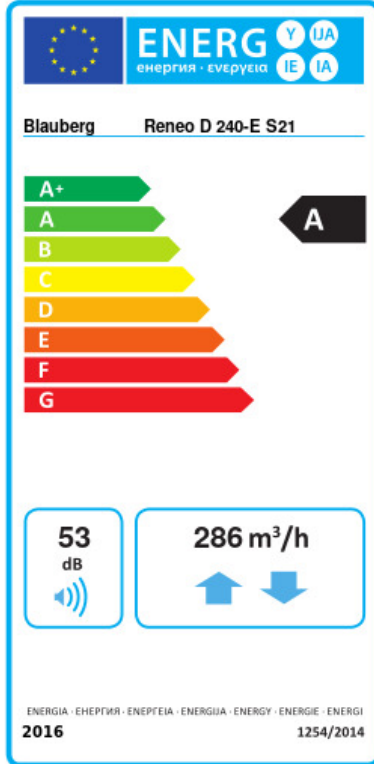
Dimensions

Ø D	H	L	L1	W / B	W1 / B1
160	272	930	617	640	300





Ecodesign



Trademark	Blauberg			
Model	Reneo D 240-E S21			
Specific energy consumption (SEC) (kWh/(m²/a))	Cold	Average	Warm	
	-73.2	A+	-37.9	A -15 E
Type of ventilation unit	Bidirectional			
Type of drive installed	Variable speed			
Type of heat recovery system	Recuperative			
Thermal efficiency of heat recovery (%)	69			
Maximum flow rate (m³/h)	286			
Electric power input (W)	171			
Reference flow rate (m³/s)	0.056			
Reference pressure difference (Pa)	50			
Specific power input (SPI) (W/(m³/h))	0.323			
Control typology	Local demand control			
Maximum internal leakage rates (%)	2.7			
Maximum external leakage rates (%)	2.7			
Declared typology	RVU BVU			
Sound power level (dB(A))	53			
The annual electricity consumption (AEC) (kWh/a)	Cold	Average	Warm	
	753	216	171	
The annual heating saved (AHS) (kWh/a)	Cold	Average	Warm	
	8331	4258	1926	