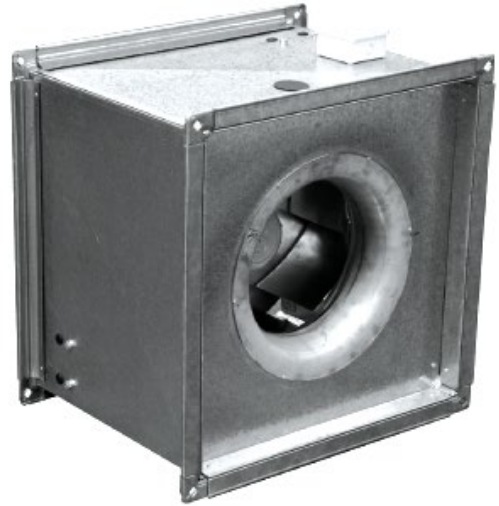


TEFC

Square Inline Centrifugal Fans

Application

- Suitable for duct mounting in any position, they are suitable for a wide range of ventilation applications including car parks, kitchen exhaust, supply and return air where medium to high pressures are required.



Design

- Galvanised steel fan casing with flanged end connections.

Motor

- TEFC type available only in 415V three phase with four, six and eight pole options. Motors are speed controllable using variable frequency control.
- Options include 2 speed motors and motors comply with Exe, Exd, Exn etc. Standards.

Protection

- IP55 with integral thermal protection. Higher degrees of protection are available.

Impeller

- High efficiency backward curved impellor.

Technical Data & Specification

- Email info@blaubergventilation.com.au for all technical data, sizes, fan curves, noise specification or any other information required.