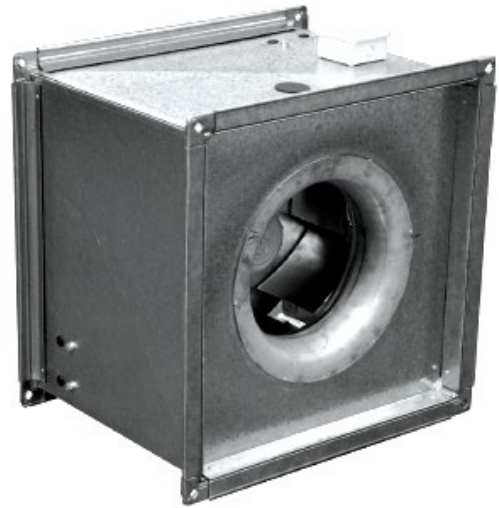


# Square Inline Centrifugal Fans

## Application

- Suitable for duct mounting in any position. They are suitable for a wide range of ventilation applications including car parks, kitchen exhaust, supply and return air where medium to high pressures are required.



## Design

- Galvanised steel fan casing with flanged end connections.

## Motor

- External rotor motor in 240V single phase and 415V three phase with four, six and eight pole options. Motors are speed controllable.
- All three phase motors incorporate 2-speed Star/Delta motors.

## Protection

- IP54 with integral thermal protection.

## Impeller

- High efficiency backward curved impellor.

## Technical Data & Specification

- Email [info@blaubergventilation.com.au](mailto:info@blaubergventilation.com.au) for all technical data, sizes, fan curves, noise specification or any other information required.